



Dr. Karelyn Cruz
National Program
Leader



USDA NIFA

INVESTING IN SCIENCE | SECURING OUR FUTURE | WWW.NIFA.USDA.GOV



United States
Department of
Agriculture

National Institute
of Food
and Agriculture

USDA NIFA

- **Mission**

Invest in and advance agricultural research, education and extension to solve societal challenges

- USDA's extramural funding agency
- ~\$1.5 Billion funding (FY16)

Website: <https://nifa.usda.gov/>



United States
Department of
Agriculture

National Institute
of Food
and Agriculture



RESEARCH

Provides answers to complex issues facing our nation and our world



EDUCATION

Strengthens schools and universities to train the next generation of scientists, educators, producers and citizens.

EXTENSION

Takes knowledge gained through research and education to the people who need it the most.



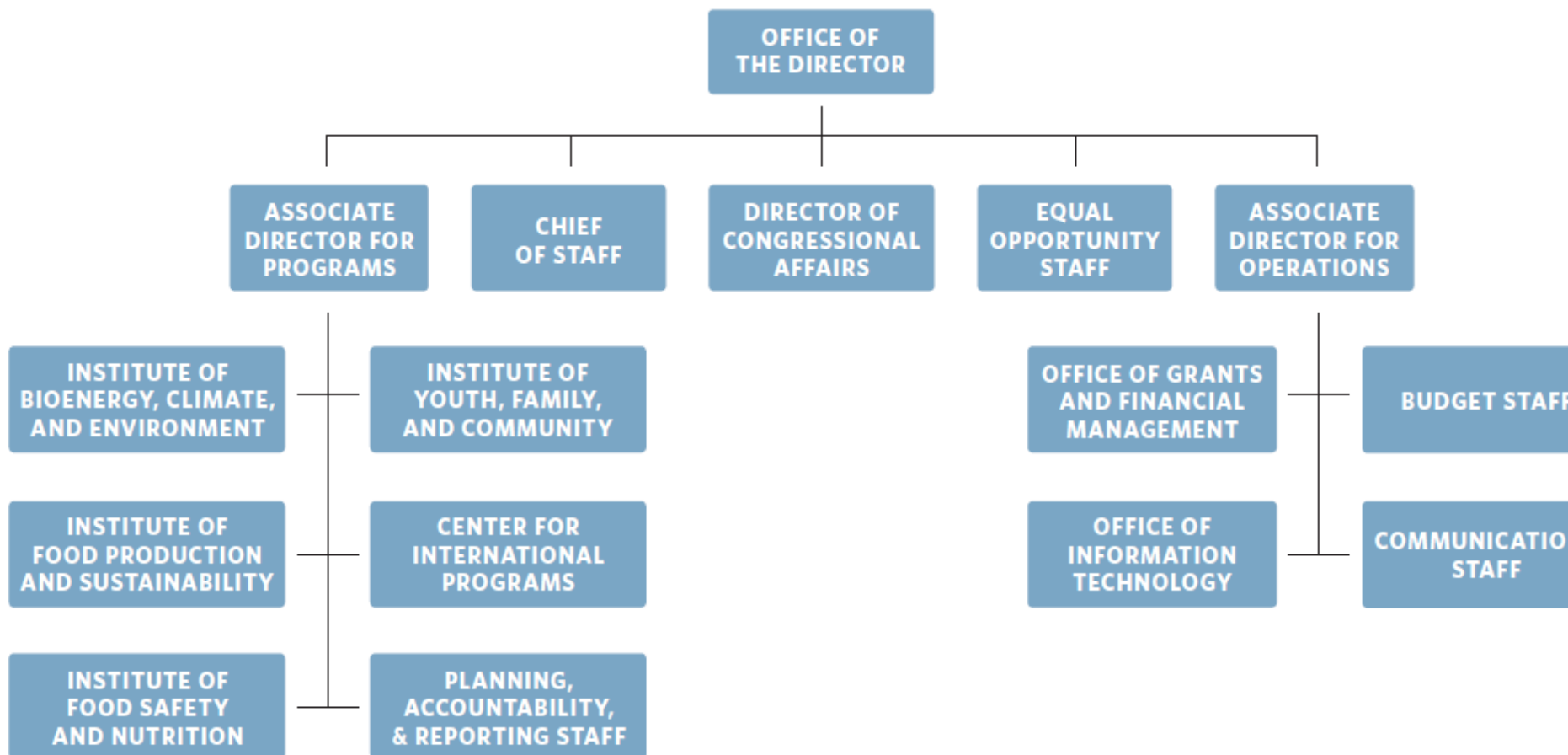


United States
Department of
Agriculture

National Institute
of Food
and Agriculture

The Organization of USDA'S NATIONAL INSTITUTE OF FOOD AND AGRICULTURE — 2.23.14

OVERVIEW VERSION

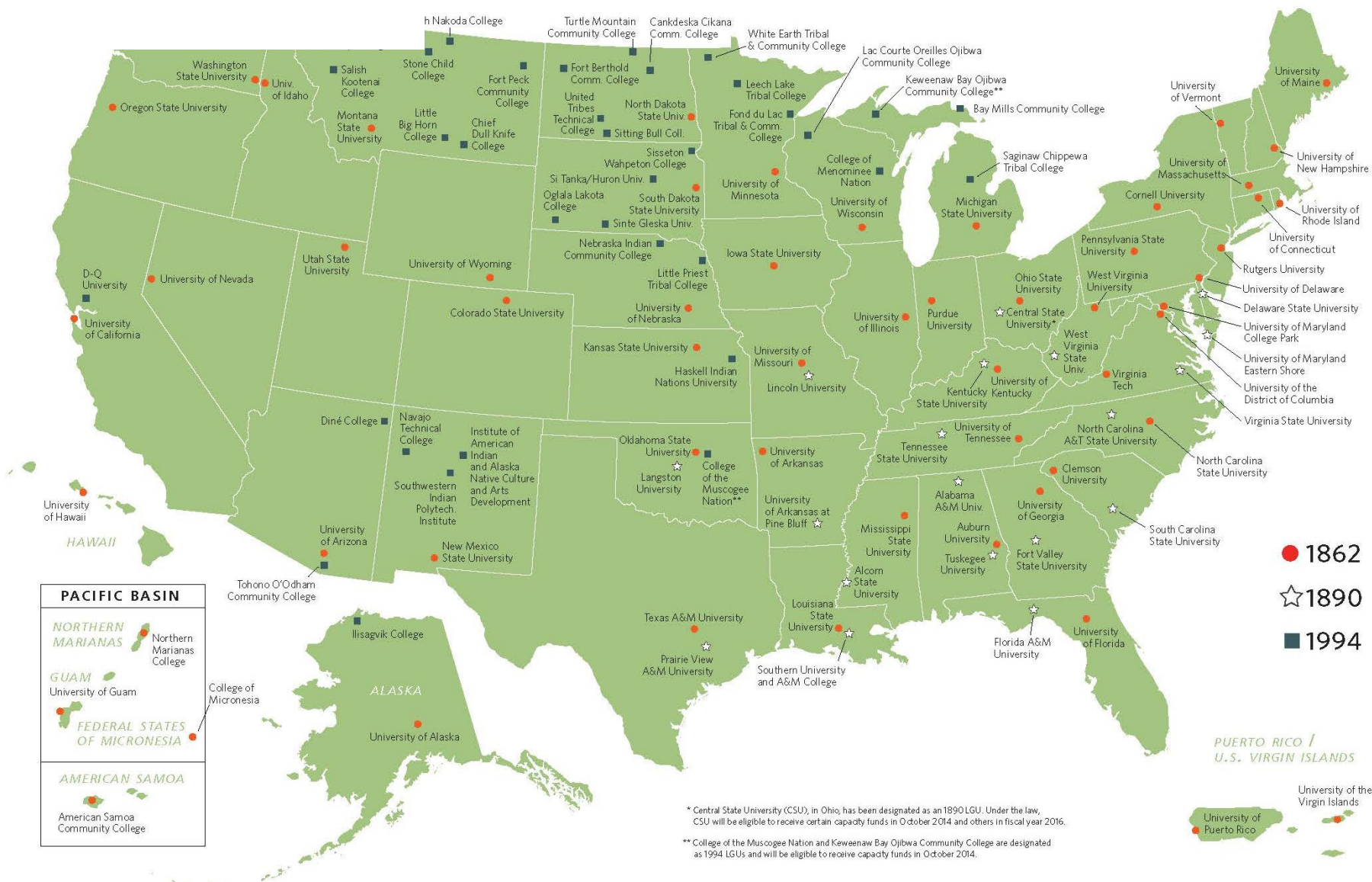




United States
Department of
Agriculture

National Institute
of Food and
Agriculture

NIFA LAND-GRANT COLLEGES AND UNIVERSITIES





United States
Department of
Agriculture

National Institute
of Food
and Agriculture

Priority Science Areas

- Food Security
- Climate Variability and Change
- Water
- Sustainable Bioenergy
- Childhood Obesity Prevention
- Food Safety



How NIFA funds are provided

- **Capacity grants** - for land-grant institutions, schools of forestry, and schools of veterinary medicine to fund research and extension activities. The amount of funds provided to each institution is determined by a formula.
- **Competitive grants** - for fundamental and applied research, extension, and higher education activities, as well as for projects that integrate research, education, and extension functions. Individuals, institutions, or organizations may apply according to criteria listed in the Request For Applications (RFA).



United States
Department of
Agriculture

National Institute
of Food
and Agriculture

Capacity Grants

- Hatch funds - Research
- McIntire-Stennis Cooperative Forestry Research
- Animal Health Formula Program
- Smith-Lever – Extension programs



Competitive Grants

>30 Competitive Grant Programs (many with broad eligibility)

- **Mandatory Programs:**

- Specialty Crop Research Initiative (SCRI)
- Organic Agriculture Research and Extension Initiative (OREI)
- Beginning Farmer and Rancher Development Program (BFRDP)
- Community Food Projects (CFP)

- **Agriculture and Food Research Initiative (AFRI)**
- **Biotechnology Risk Assessment Research Grants Program (BRAG)**
- **Small Business Innovation Research Program (SBIR)**
- **Crop Protection and Pest Management Program (CPPM)**



Specialty Crop Research Initiative (SCRI)

- **Focus areas:**
 - Research in plant breeding, genetics, genomics, and other **methods to improve crop characteristics**
 - Efforts to **identify and address threats from pests and diseases**, including threats to specialty crop pollinators
 - Efforts to **improve production efficiency, handling and processing, productivity, and profitability** over the long term (including specialty crop policy and marketing)
 - **New innovations and technology**, including improved mechanization and technologies that delay or inhibit ripening
 - **Methods to prevent, detect, monitor, control, and respond to potential food safety hazards** in the production efficiency, handling and processing of specialty crops.
- NPL- [Thomas \(Tom\) Bewick](mailto:tbewick@nifa.usda.gov) (tbewick@nifa.usda.gov)



United States
Department of
Agriculture

National Institute
of Food
and Agriculture

Organic Agriculture Research and Extension Initiative (OREI)

- The purpose of this program is to fund high priority research, education and extension projects that will enhance the ability of producers and processors who have already adopted organic standards to **grow and market high quality organic agricultural products**.
- Priority concerns include biological, physical, and social sciences, including economics.
- NPL- Mathieu Ngouagio (mngouajio@nifa.usda.gov)



United States
Department of
Agriculture

National Institute
of Food
and Agriculture

Agriculture and Food Research Initiative (AFRI)

- Food, Agriculture, Natural Resources and Human Sciences Education and Literacy Initiative (ELI)
 - Professional development of secondary school teachers and educational professionals and training of undergraduate students, and predoctoral and postdoctoral fellows.
 - NPL- Ray Ali- rali@nifa.usda.gov
- Foundational Programs (basic research)
- Challenge Areas (more applied research and often integrated)



United States
Department of
Agriculture

National Institute
of Food
and Agriculture

AFRI Foundational Program (FY17)

Program Areas:

- Plant health, and production and plant products
- Animal health, and production and animal products
- Food safety, nutrition, and health
- Bioenergy, natural resources, and environment (BNRE)
- Agriculture systems and technology
- Agriculture economics and rural communities
- Critical Agricultural Research and Extension (CARE)
- Exploratory Research



United States
Department of
Agriculture

National Institute
of Food
and Agriculture

AFRI FASE Grants

**New Investigator
Grants (no set-aside)**

**Strengthening Grants (11.25%
of AFRI funding)**

Eligibility:

- **EPSCoR states**
- **Minority-serving institutions**
not among the most successful
- **Small or mid-sized institutions**
not among the most successful

**Education Literacy Initiative
(Pre- and Postdoctoral
Fellowship Grants) (3.75%
of AFRI funding)**

- **Sabbatical Grants**
- **Equipment Grants**
- **Seed Grants**
- **Strengthening Standard Grants**
- **Strengthening CAP
(Coordinated Agricultural
Project) Grants**
- **Strengthening Conference
Grants**



SBIR Program

- Only registered small businesses can apply. Small business= <500 employees and for-profit
- Subcontracting to Universities and USDA Labs permitted and encouraged (but not mandatory)
- Award grants only - Ideas are investigator- initiated
- Awards based on scientific and technical merit, PI and company qualifications, and commercial potential
- Funds allocated to topic areas in proportion to number of proposals received



Features of USDA SBIR program

- Phase I Grants = 8 Months/\$100,000
- Phase II Grants = 2 Years/\$600,000
- 12 Month no-cost extension available
- Proposals reviewed by confidential peer review. All applicants receive verbatim copies of reviews
- USDA provides priority areas in each topic area



United States
Department of
Agriculture

National Institute
of Food
and Agriculture

Topic Areas

- Forests & Related Resources
- Air, Water and Soils
- Animal Production and Protection
- Food Science and Nutrition
- Plant Production and Protection-Biology
- Plant Production and Protection-Engineering
- Biofuels and Biobased Products
- Aquaculture
- Rural and Community Development
- Small and Mid-Size Farms



United States
Department of
Agriculture

National Institute
of Food
and Agriculture

Thanks!

