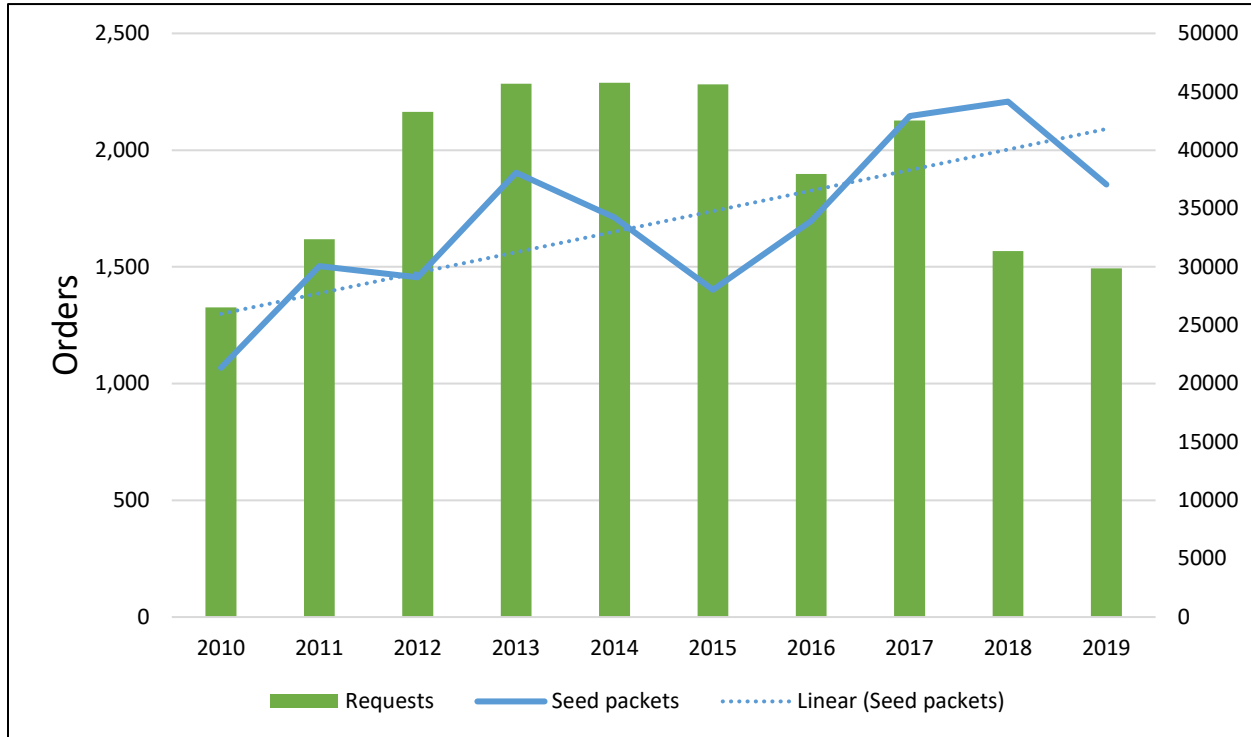


Appendix

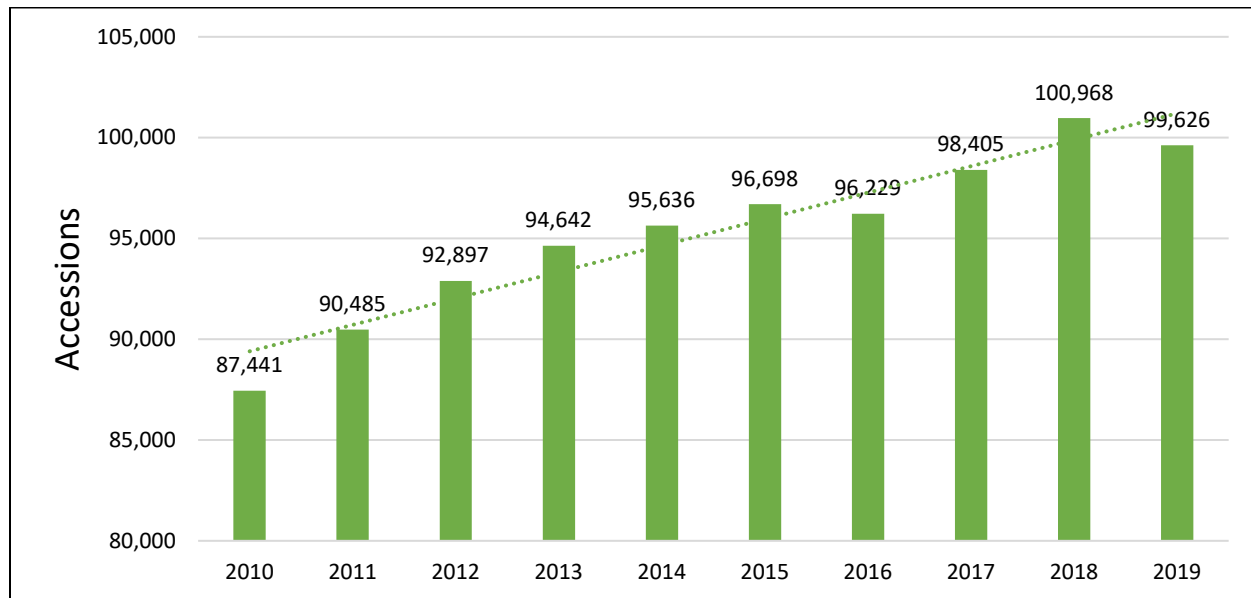


Attachment 1. Number of orders and order items distributed annually by WRPIS from 2010 to 2019. *(e.g., - seed packets, garlic cloves, ...).

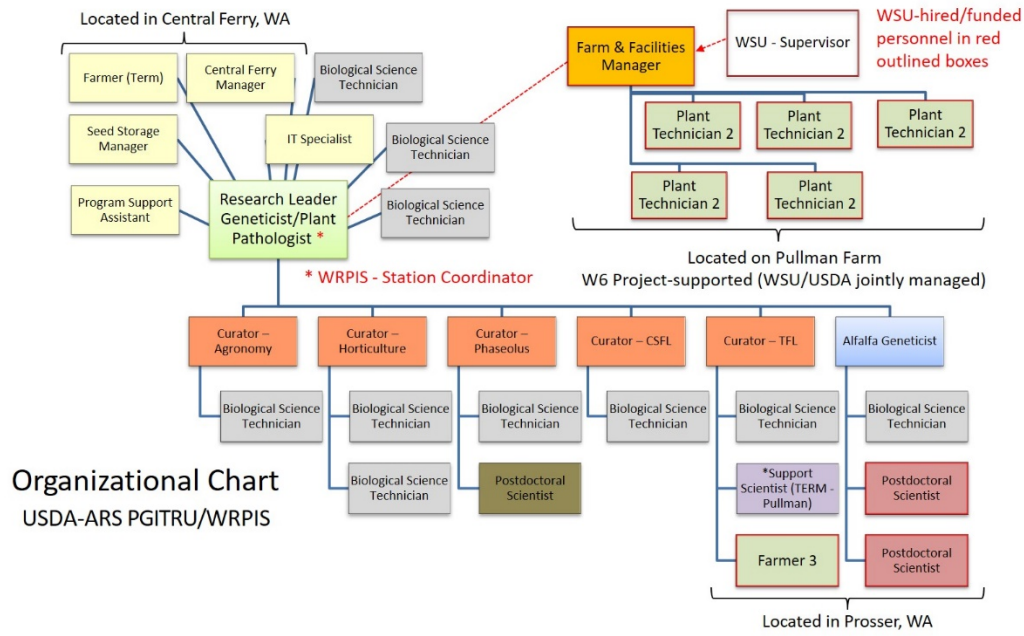
Attachment 2. Number of NPGS and WRPIS plant germplasm orders and order items (e.g., seed or clonal propagules) distributed between 2015-2019 to each of the 13 Western Region states.

State	Orders			Order Items		
	NPGS	WRPIS	WRPIS %	NPGS	WRPIS	WRPIS %
Alaska	83	13	15.7	514	66	12.8
Arizona	377	77	20.4	1,0726	728	6.8
California	3,235	579	17.9	58,101	8,994	15.5
Colorado	590	117	19.8	10,150	1,502	14.8
Hawaii	225	15	6.7	2,290	155	6.8
Idaho	404	107	26.5	19,339	658	3.4
Montana	247	74	29.9	6,160	1,472	23.9
Nevada	137	28	20.4	3,237	1,153	35.6
New Mexico	205	43	21.0	2,861	631	22.1
Oregon	780	191	24.5	9,414	3,207	34.1
Utah	202	69	34.2	5,930	4,096	69.1
Washington	1,365	447	32.8	43,056	20,259	47.1
Wyoming	99	50	50.5	1,916	1,214	63.4
Total	7,949	1,810	22.8	17,3694	44,135	25.4

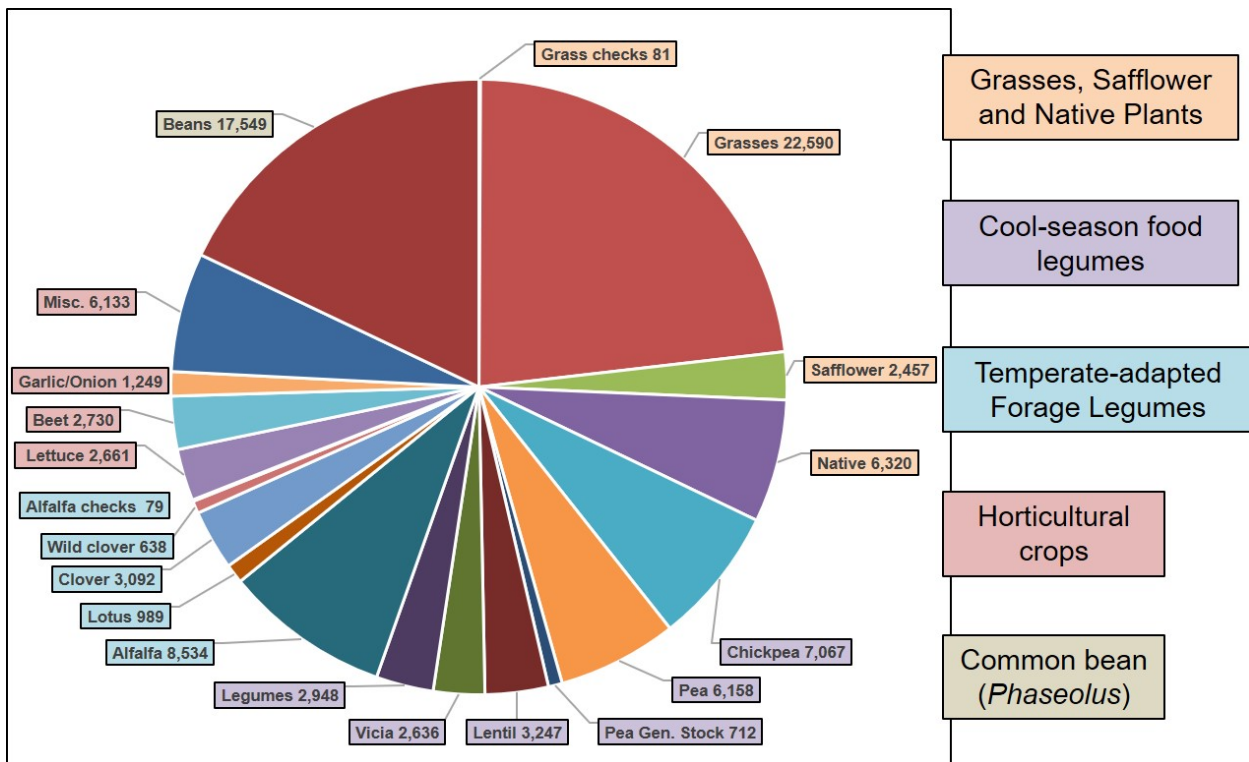
*Data compiled from GRIN-Global and provided by Seed Storage/Database Manager Lisa Taylor



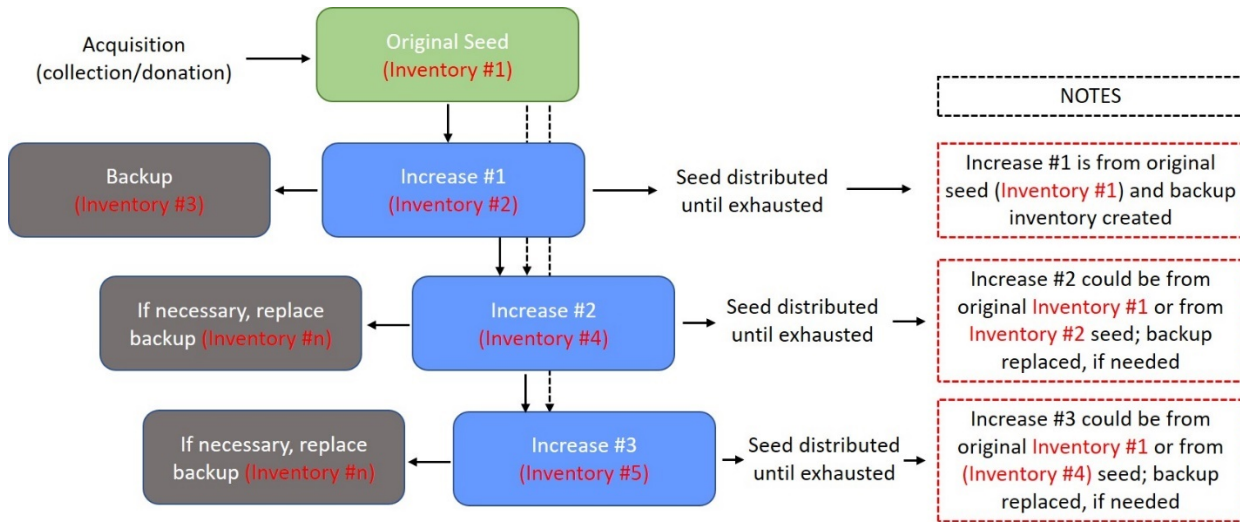
Attachment 3. Total number of accessions managed by WRPIS since 2010 (numbers recorded at the end of each calendar year).



Attachment 4. Calendar year 2021, WRPIS organizational chart showing the W6 project supported personnel



Attachment 5. Distribution of WRPIS managed germplasm accessions by curatorial program (May 2020).



Attachment 6. Overview for seed germlasm regeneration used by the WRPIS showing three (could be more) increase generations, distribution and corresponding inventories.